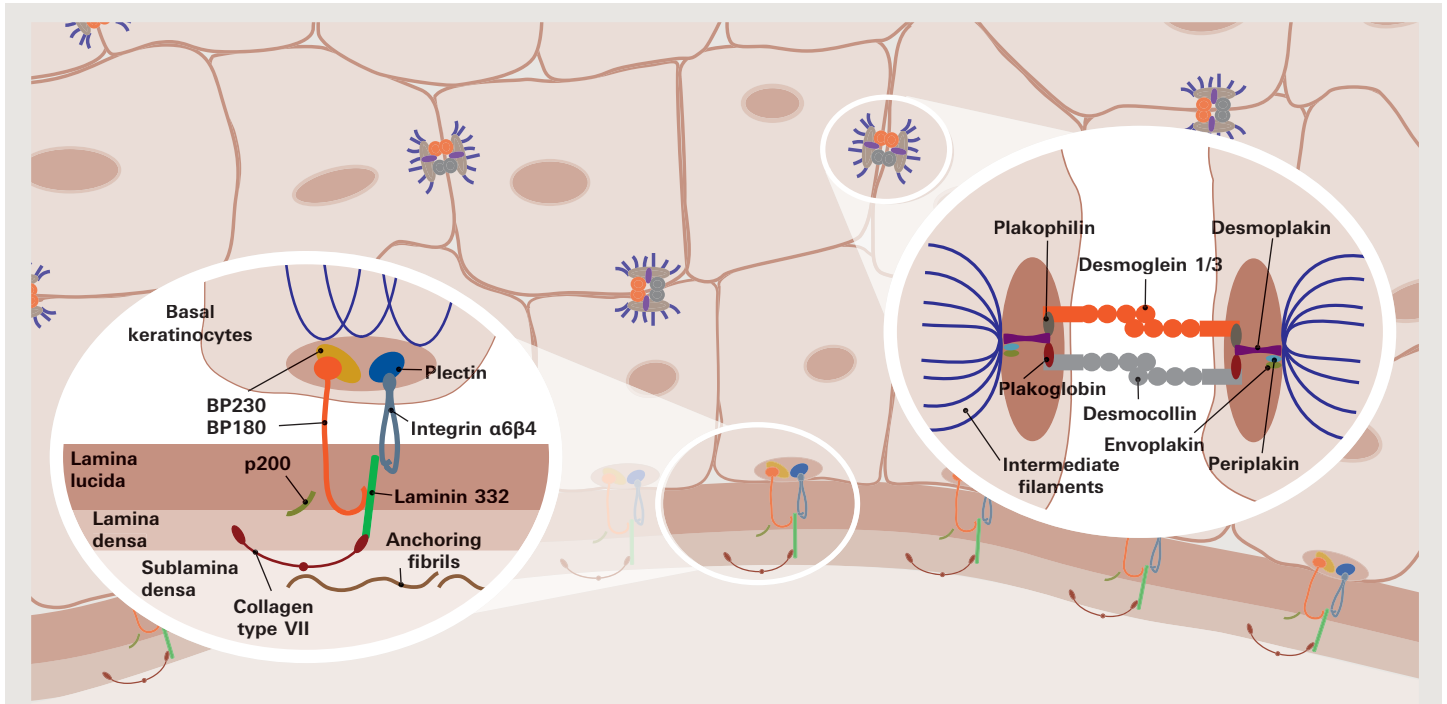




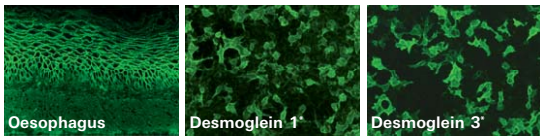
# Serological diagnosis of bullous autoimmune dermatoses



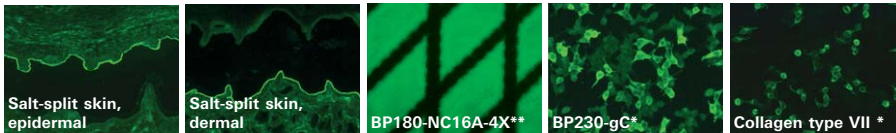
## IIFT

### Single substrates (BIOCHIPS)

Anti-desmosomes (e.g. anti-desmoglein 1, -desmoglein 3, -plakins)



Anti-epidermal basement membrane (e.g. anti-BP180, anti-BP230)



\*transfected cells, \*\*purified antigens (EUROPLUS)

### Dermatology Mosaic

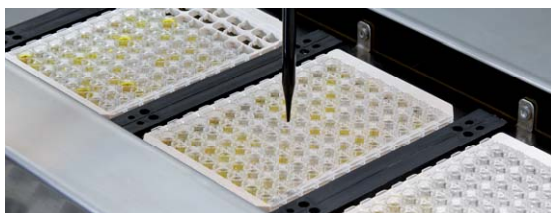


Slide



Combination of BIOCHIPs

## ELISA



### Monospecific detection

of Anti-BP230-CF, -BP180-NC16A-4X, -Desmoglein 1, -Desmoglein 3, -Envoplakin, -Collagen Type VII

### Multiparameter analysis

with the Dermatology Profile ELISA