



Differenzierte ANCA-Bestimmung mit IIFT-Mosaiken



- **Zeit- und Kostenersparnis: Such- und Differenzierungstest in einem**
- **Sichere Auswertung: Ausschluss falsch positiver Ergebnisse auf einen Blick**
- **Flexibilität im Labor: manuelle und automatische Abarbeitung**

Abkürzungsverzeichnis

Allgemeines

| | |
|------|---------------------------------|
| EOH | Ethanol-fixiert |
| HCHO | Formalin-fixiert |
| IIFT | Indirekter Immunfluoreszenztest |
| NW | Normalwert |
| RE | Relative Einheit |

IIFT-Muster

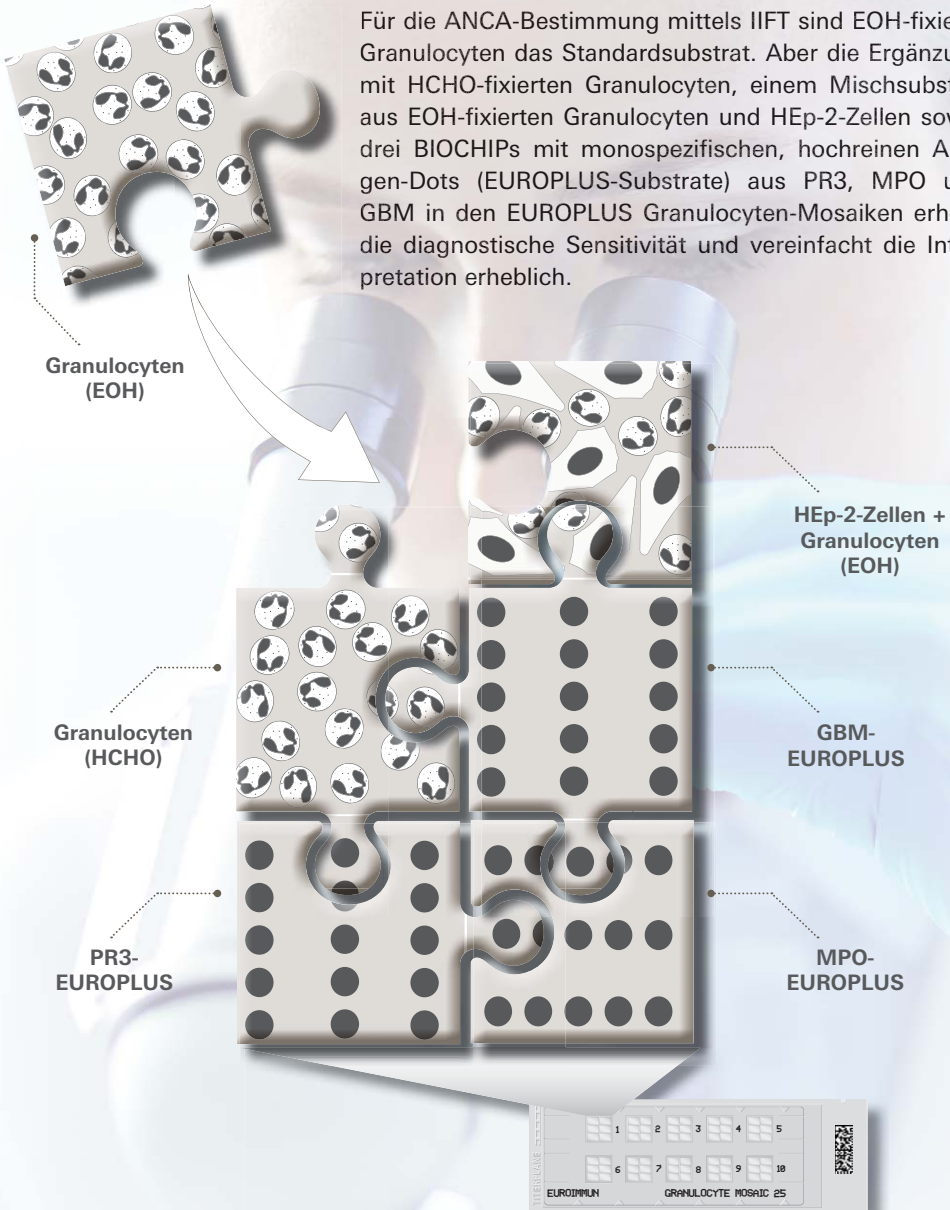
| | |
|------------|--|
| ANA | Anti-nukleäre Antikörper |
| ANCA | Anti-neutrophile cytoplasmatische Antikörper |
| atyp. ANCA | Atypische pANCA |
| cANCA | Cytoplasmatische ANCA |
| pANCA | Perinukleäre ANCA |

Antigene

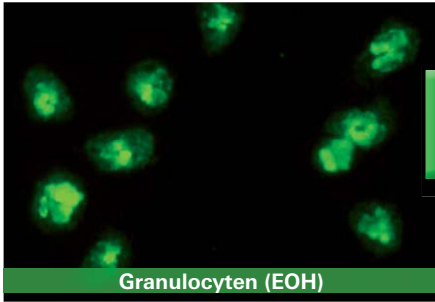
| | |
|-------|---------------------------------------|
| BPI | Bakterien-permeabilisierendes Protein |
| dsDNA | Doppelsträngige DNA |
| GBM | Glomeruläre Basalmembran |
| MPO | Myeloperoxidase |
| PR3 | Proteinase 3 |

Das EUROPLUS Granulocyten-Mosaik 25

Für die ANCA-Bestimmung mittels IIFT sind EOH-fixierte Granulocyten das Standardsubstrat. Aber die Ergänzung mit HCHO-fixierten Granulocyten, einem Mischsubstrat aus EOH-fixierten Granulocyten und HEp-2-Zellen sowie drei BIOCHIPS mit monospezifischen, hochreinen Antigen-Dots (EUROPLUS-Substrate) aus PR3, MPO und GBM in den EUROPLUS Granulocyten-Mosaiken erhöht die diagnostische Sensitivität und vereinfacht die Interpretation erheblich.

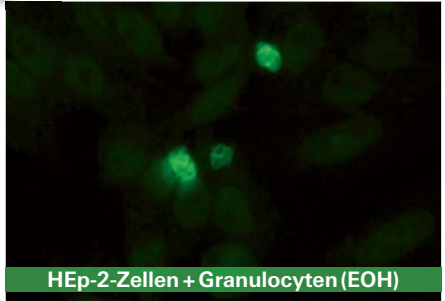


FA 1201-####-25

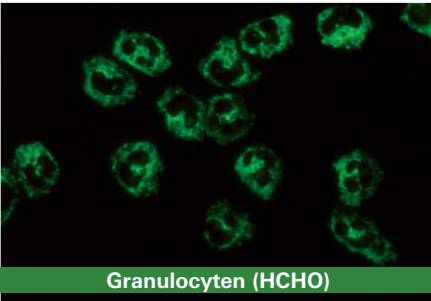


Granulocyten (EOH)

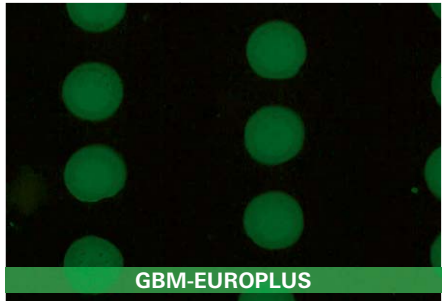
pANCA
Anti-MPO
ANA ?



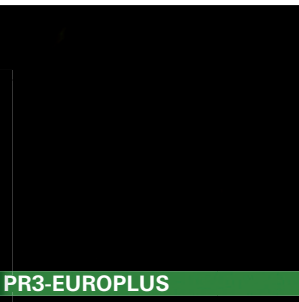
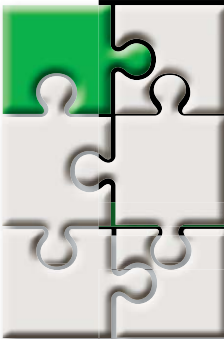
HEp-2-Zellen + Granulocyten (EOH)



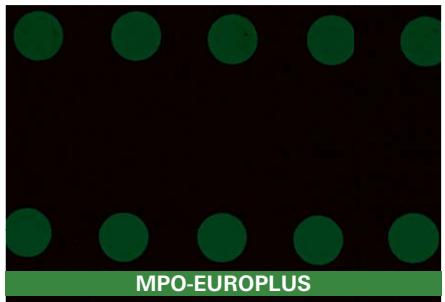
Granulocyten (HCHO)



GBM-EUROPLUS



PR3-EUROPLUS



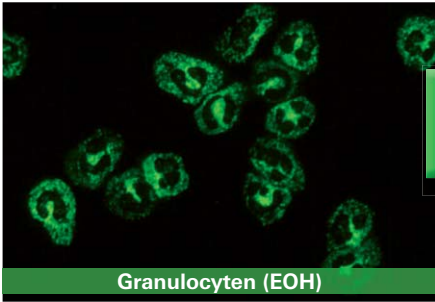
MPO-EUROPLUS

**pANCA-positiv,
anti-MPO-positiv
anti-GBM-positiv**

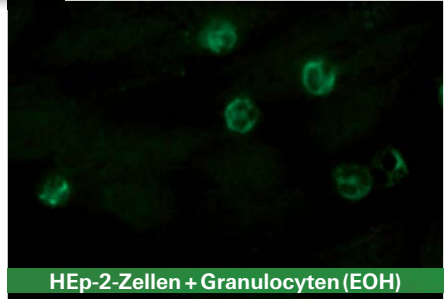


Weitere Angaben zur Probe: Anti-PR3-ELISA: <2 RE/ml (NW <20 RE/ml), Anti-MPO-ELISA: >200 RE/ml (NW <20 RE/ml), Anti-GBM-ELISA: 94 RE/ml (NW <20 RE/ml), ANCA-Profil-ELISA: anti-PR3/-Laktoferrin/-Elastase/-Kathepsin-G/-BPI-negativ, anti-MPO-positiv Ratio 8,7 (NW Ratio 1,0), EUROLINE ANA-Profil 23 (IgG): negativ

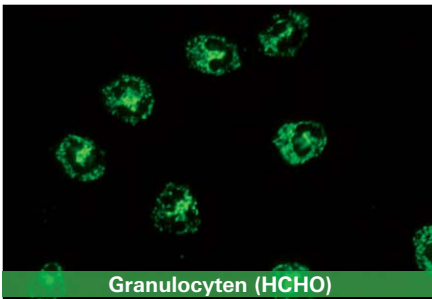
cANCA
Anti-PR3



Granulocyten (EOH)



HEp-2-Zellen + Granulocyten (EOH)



Granulocyten (HCHO)



GBM-EUROPLUS



PR3-EUROPLUS

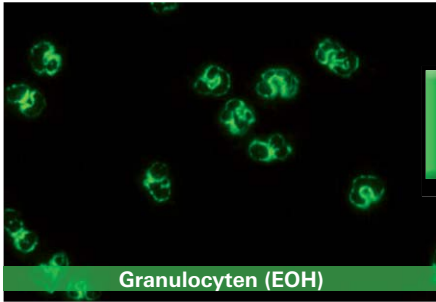


MPO-EUROPLUS

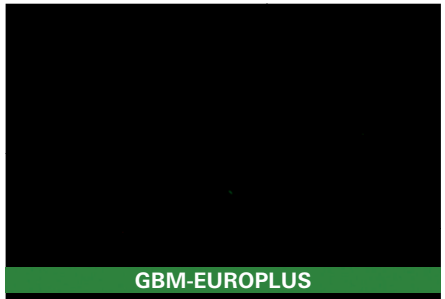
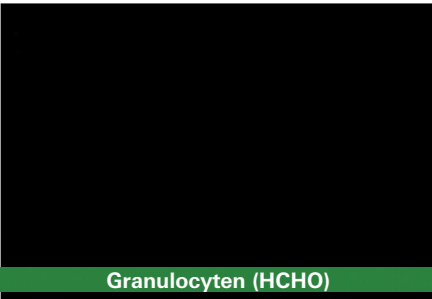
cANCA-positiv,
anti-PR3-positiv



Keine weiteren Angaben zur Probe



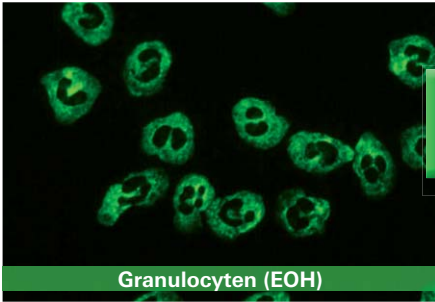
pANCA
anti-MPO
ANA ?



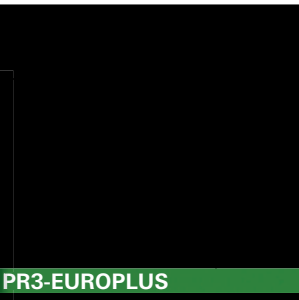
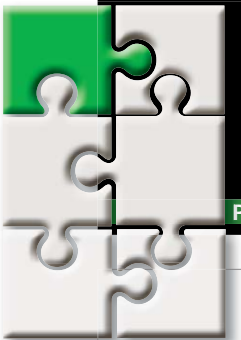
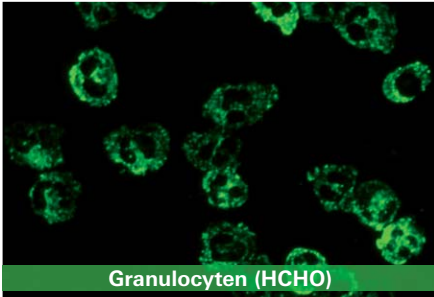
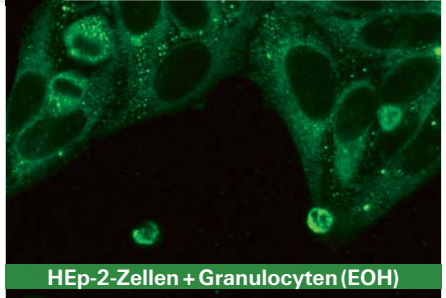
**Verdacht auf atyp. ANCA,
Zielantigen unbekannt**



Weitere Angaben zur Probe: Anti-PR3-ELISA: <2 RE/ml (NW <20 RE/ml), Anti-MPO-ELISA: <2 RE/ml (NW <20 RE/ml), Anti-GBM-ELISA: <2 RE/ml (NW <20 RE/ml), ANCA-Profil-ELISA: anti-PR3-/Laktoferrin-/MPO-/Elastase-/Kathepsin-G-/BPI-negativ

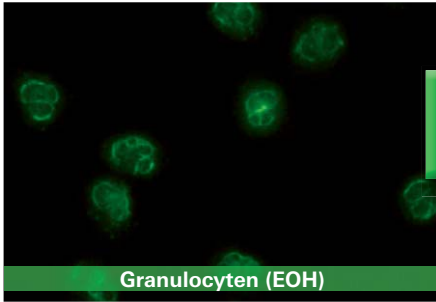


cANCA
anti-PR3 ?

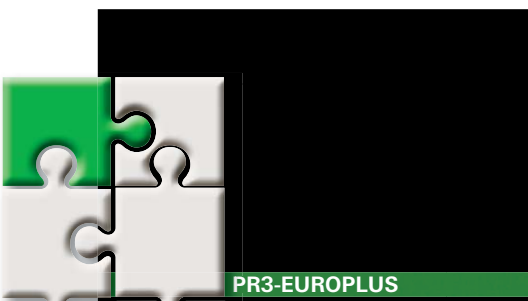
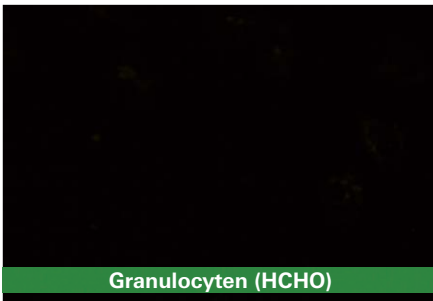
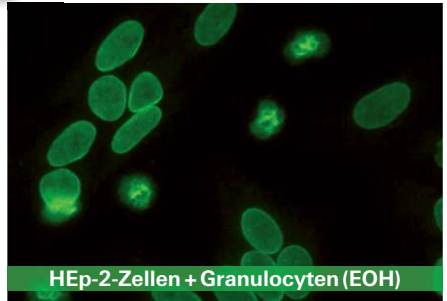


**cytoplasmatisches Muster
auf HEp-2-Zellen →
Verdacht auf ANA** !

Keine weiteren Angaben zur Probe



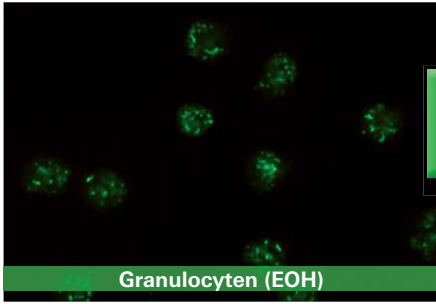
pANCA
anti-MPO
ANA ?



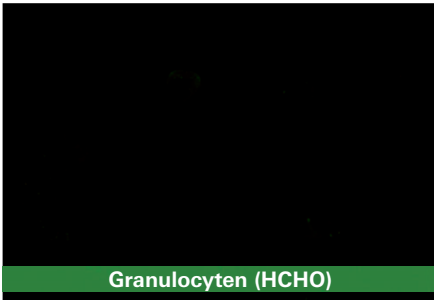
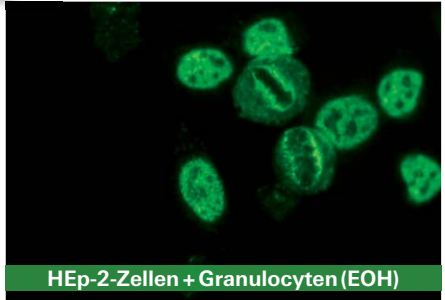
nukleäres Muster auf HEp-2-Zellen →
Verdacht auf ANA



Keine weiteren Angaben zur Probe



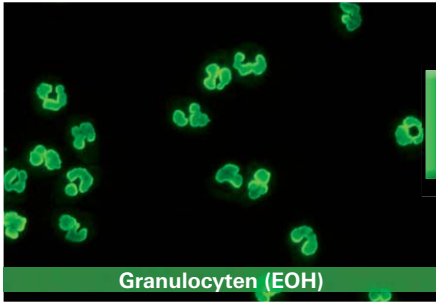
pANCA
anti-MPO
ANA ?



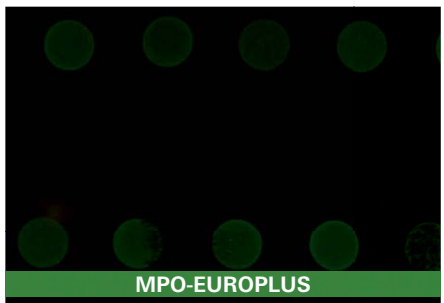
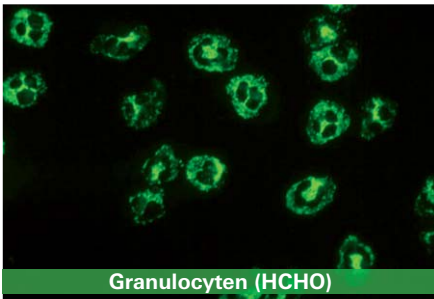
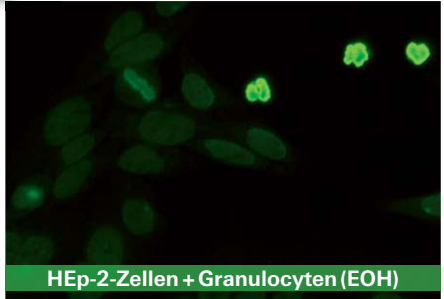
granuläres Muster auf Hep-2-Zellen →
Verdacht auf ANA



Keine weiteren Angaben zur Probe



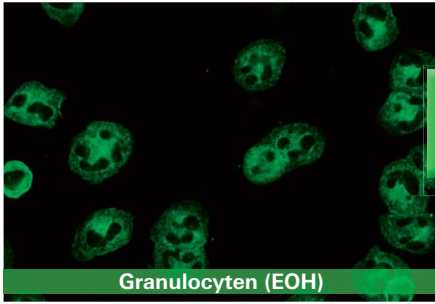
pANCA
anti-MPO
ANA ?



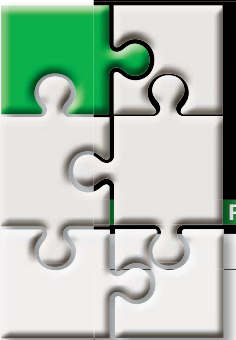
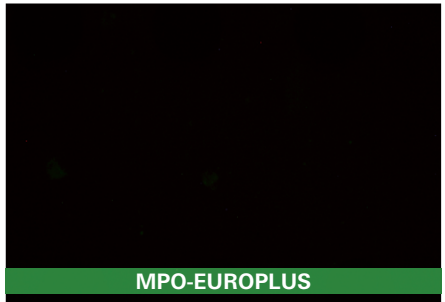
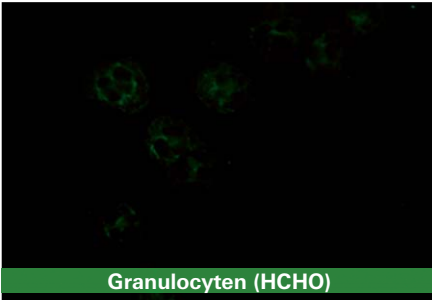
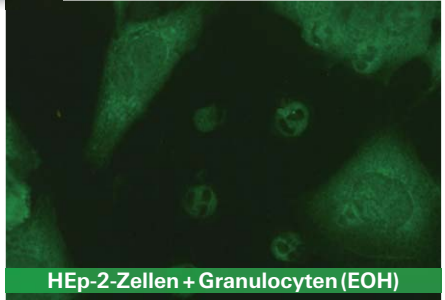
**pANCA-positiv,
anti-MPO-positiv,
nukleäres Muster auf HEp-2-Zellen →
Verdacht auf ANA**



Weitere Angaben zur Probe: Anti-PR3-ELISA: <2 RE/ml (NW <20 RE/ml), Anti-MPO-ELISA: 83 RE/ml (NW <20 RE/ml), Anti-GBM-ELISA: <2 RE/ml (NW <20 RE/ml), ANCA-Profil-ELISA: anti-PR3-/Laktoferrin-/Kathepsin-G-/BPI-negativ, anti-MPO-positiv Ratio 4,9 (NW Ratio 1,0), anti-Elastase-positiv Ratio 4,2 (NW Ratio 1,0), EUROLINE ANA-Profil 23 (IgG): negativ



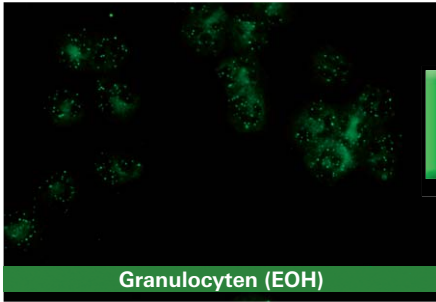
cANCA
anti-PR3 ?



cytoplasmatisches Muster
auf HEp-2-Zellen →
Verdacht auf ANA

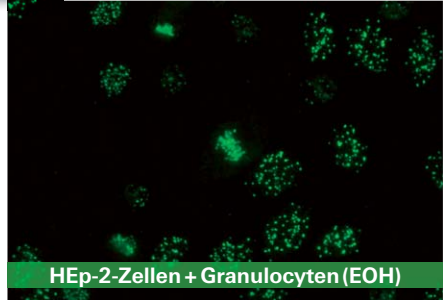


Weitere Angaben zur Probe: Anti-PR3-ELISA: 5 RE/ml (NW < 20 RE/ml), Anti-MPO-ELISA: 2 RE/ml (NW < 20 RE/ml), Anti-BPI-/Elastase-/Kathepsin-G-/GBM-ELISA: negativ, EUROLINE ANA-Profil 3: anti-rib.-P-Proteine-Antikörper positiv

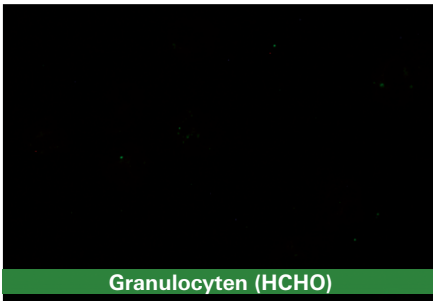


Granulocyten (EOH)

pANCA
cANCA ?



HEp-2-Zellen + Granulocyten (EOH)



Granulocyten (HCHO)



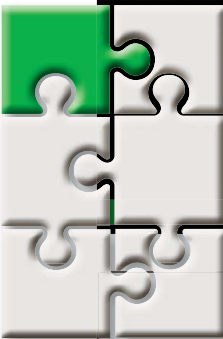
GBM-EUROPLUS



PR3-EUROPLUS



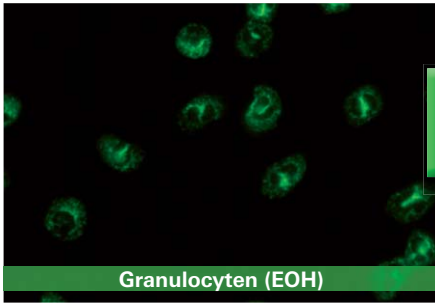
MPO-EUROPLUS



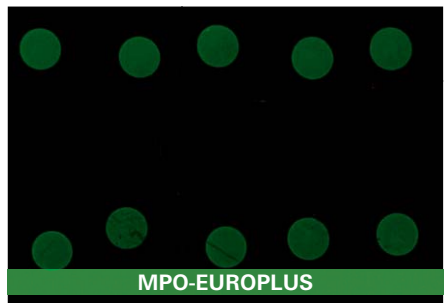
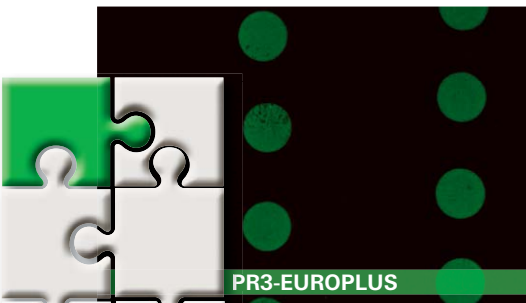
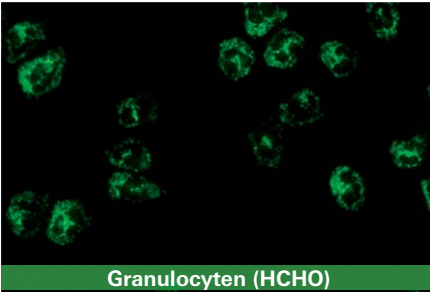
**nukleäres Muster auf HEp-2-Zellen →
Verdacht auf ANA**



Weitere Angaben zur Probe: Anti-PR3-ELISA: 2 RE/ml (NW <20 RE/ml), Anti-MPO-ELISA: 2 RE/ml (NW <20 RE/ml), Anti-BPI-/Elastase-/Kathepsin-G-/GBM-ELISA: negativ, EUROLINE ANA-Profil 3 (IgG): anti-Zentromer-B-Protein-Antikörper-positiv



pANCA
cANCA ?

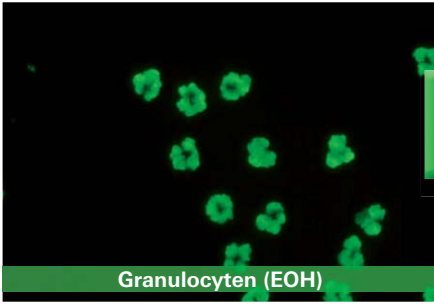


**ANCA,
anti-PR3- und anti-MPO-positiv**

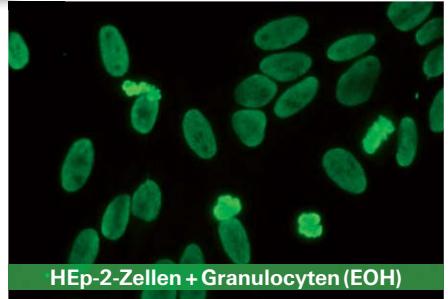


Weitere Angaben zur Probe: Anti-PR3-ELISA: 120 RE/ml (NW <20 RE/ml), Anti-MPO-ELISA: 141 RE/ml (NW <20 RE/ml), Anti-GBM-/Laktoferrin-/Elastase-/Kathepsin-G-/BPI-ELISA: negativ, EUROLINE ANA-Profil 23 (IgG): negativ

pANCA
Anti-MPO
ANA



Granulocyten (EOH)



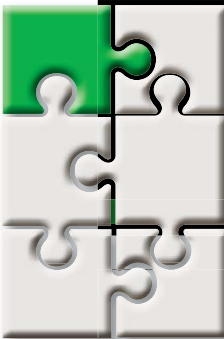
HEp-2-Zellen + Granulocyten (EOH)



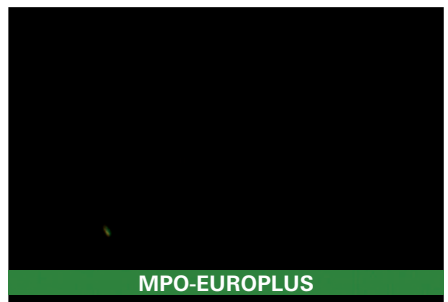
Granulocyten (HCHO)



GBM-EUROPLUS



PR3-EUROPLUS

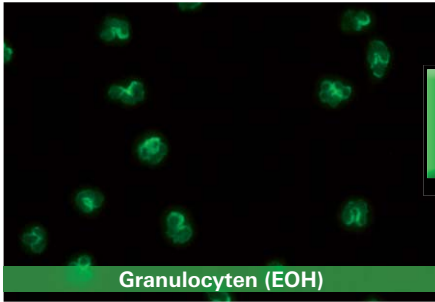


MPO-EUROPLUS

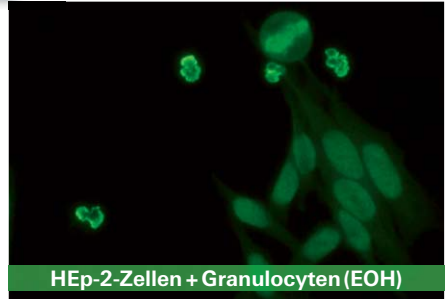
nukleäres Muster auf HEp-2-Zellen →
Verdacht auf ANA



Weitere Angaben zur Probe: Anti-PR3-ELISA: <2 RE/ml (NW <20 RE/ml), Anti-MPO-ELISA: <2 RE/ml (NW <20 RE/ml), Anti-Laktoferrin-/Elastase-/Kathepsin-G-/BPI-/GBM-ELISA: negativ, EUROLINE ANA-Profil 23 (IgG): anti-Nukleosomen-positiv



pANCA
Anti-MPO
ANA ?



**Verdacht auf atyp. ANCA,
nukleäres Muster auf HEp-2-Zellen →
Verdacht auf ANA**



Weitere Angaben zur Probe: Anti-PR3-ELISA: 5 RE/ml (NW < 20 RE/ml), Anti-MPO-ELISA: 3 RE/ml (NW < 20 RE/ml), Anti-GBM-ELISA: < 2 RE/ml (NW < 20 RE/ml), ANCA-Profil-ELISA: anti-PR3/-Laktoferrin/-MPO/-Kathepsin-G/-BPI-negativ, anti-Elastase-positiv Ratio 4,5 (NM Ratio < 1,0), EUROLINE ANA-Profil 23 (IgG): anti-Histone-Antikörper erhöht



Weitere IIFT-Produkte zur Bestimmung von ANCA

| Bestell-Nr. | Substrat |
|-----------------|---|
| FA 1200-#### | Granulocyten (EOH) |
| FA 1201-#### | Granulocyten (HCHO) |
| FA 1201-####-2 | Granulocyten (EOH), Granulocyten (HCHO) |
| FA 1201-####-13 | Granulocyten (EOH), Granulocyten (HCHO), HEp-2-Zellen + Granulocyten (EOH) |
| FA 1201-####-15 | Granulocyten (EOH), HEp-2-Zellen + Granulocyten (EOH) |
| FA 1201-####-22 | Granulocyten (EOH), Granulocyten (HCHO), PR3- und MPO-EUROPLUS |
| FA 1201-####-32 | Granulocyten (EOH), Granulocyten (HCHO), HEp-2-Zellen + Granulocyten (EOH), PR3- und MPO-EUROPLUS |

All-in-one-Automatisierung für IIFT: UNIQO 160



UNIQO 160
EASY. EFFICIENT. EXCEPTIONAL.

Vollautomatisch von der Primärprobe bis zum Ergebnisvorschlag



In zwei Schritten zum zuverlässigen IIFT-Ergebnis:

1. **Laden der Probe**
2. **Computergestützte IIFT-Auswertung**

