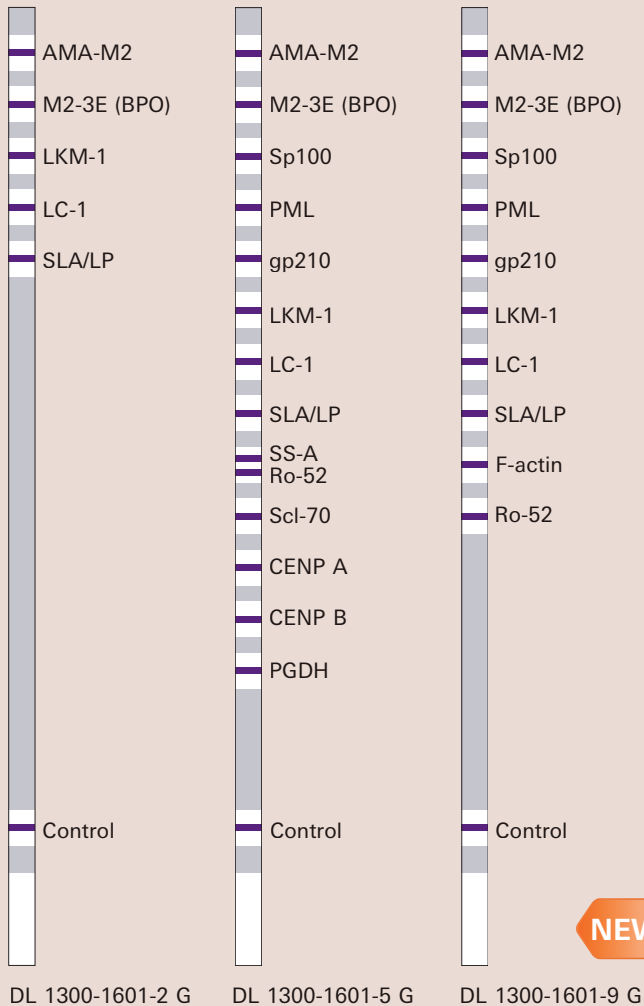




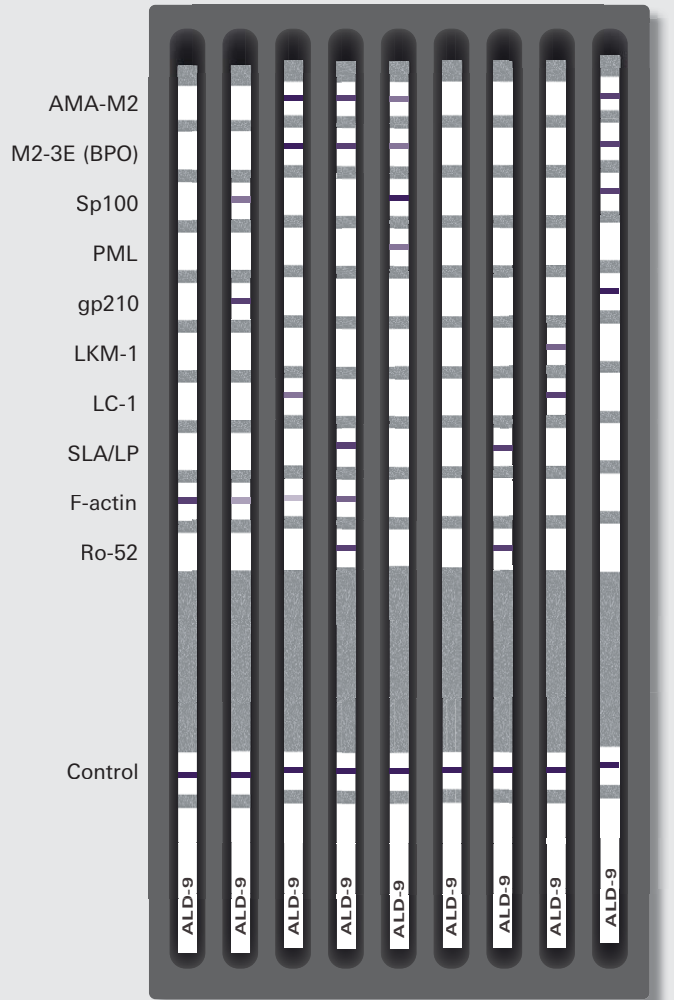
EUROLINE Profiles Autoimmune Liver Diseases

Antigen combinations



NEW!

Examples of incubated strips



AMA-M2 = native M2 antigen, main component: 74 kDa E2 subunit of pyruvate dehydrogenase complex (PDH); M2-3E (BPO) = fusion protein from the immunogenic domains of E2 subunits of the three enzyme complexes (3E) representing the main autoantigens of the M2-antigen: branched-chain 2-oxoacid dehydrogenase (BCOADH), pyruvate dehydrogenase (PDH), oxoglutarate dehydrogenase; Sp100 = speckled protein (100 kDa); PML = promyelocytic leukemia protein; gp210 = glycoprotein (210 kDa); LKM-1 = cytochrome P450 IID6; LC-1 = formiminotransferase cyclodeaminase; SLA/LP = UGA-suppressor-tRNA associated protein; Scl-70 = DNA topoisomerase I; CENP A, CENP B = centromere protein A or B; PGDH = D-3-phosphoglycerate dehydrogenase

Technical data

Applications	Determination of autoantibodies against liver antigens in the serological diagnostics of autoimmune hepatitis and primary biliary cholangitis.
Antigen substrates	Membrane chips printed with individual lines of purified, biochemically characterized antigens. Each antigen is coated onto a separate membrane chip, providing optimal efficiency of antibody detection for each protein.
Sample dilution	Serum or plasma; 1 : 101 in sample buffer.
Test procedure	30 min / 30 min / 10 min (sample / conjugate / substrate incubation), room temperature
Automation options	Compatible with the EUROBlotOne or EUROBlotMaster from EUROIMMUN; computer-based evaluation of results with EUROLineScan software.
Kit format	16 membrane strips, kits include all necessary reagents. DL 1300-2 G also available with 64 membrane strips: DL 1300-6401-2 G DL 1300-5 G and DL 1300-9 G also available as Immunoblot PreQ (pre-equipped single channels, 50 membrane strips)*: DL 1300-5001-5 G and DL 1300-5001-9 G

* Compatible only with the EUROBlotOne