



EUROLINE systemic sclerosis profiles

Line blots to support serological
diagnostics of systemic sclerosis



Testing for 13 autoantibodies relevant for systemic sclerosis using one blot strip

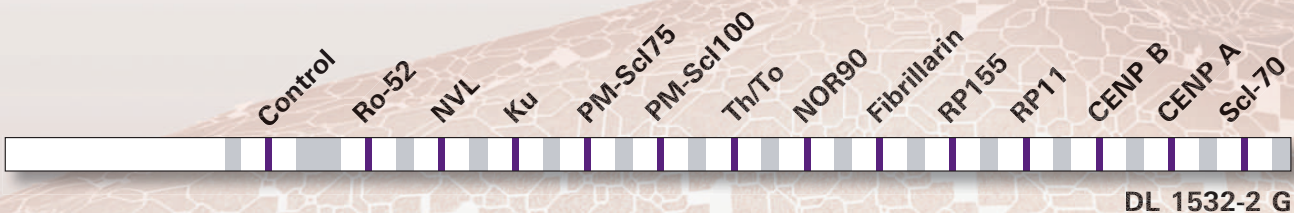


Exclusive* antigen for the detection of autoantibodies against NVL (nuclear valosin-containing protein-like)



Automated processing and evaluation using EUROBlotOne and EUROLineScan

Example: EUROLINE Systemic Sclerosis Profile 2



* Patent applications pending (EP4063864 A2, CA3151417 AA, CN115128275 A, US2022317121 AA and TW202305362 A)